



## 1200\*400\*2000mm 4 Layer Steel Light Duty Shelving Rack For Warehouse Shop

Our Product Introduction

for more products please visit us on [warehouse-rackings.com](http://warehouse-rackings.com)

### Basic Information



### Product Specification

- Model NO.: QF-Light Duty
- Material: Steel
- Structure: Rack
- Type: Pallet Racking
- Mobility: Adjustable
- Height: 0-5m
- Weight: 150kg
- Closed: Open
- Development: Conventional
- Serviceability: Common Use
- Color: Customized
- Lead Time: 25 Days
- Raw Material: Q235
- Surface Treatment: Powder Coating
- Transport Package: Safe



### More Images



## Product Description

### Product Description



**Light duty rack** refers to a type of storage rack system that is designed to hold lighter weight loads compared to heavier duty industrial racking, which is **easy to disassemble**, **easy to adjust**, can be **flexibly assembled**, and **highly adaptable**. They can **increase or decrease the number of layers** according to the placement requirements of items to achieve the best storage effect.

Product Name	Standard 5 Layers, Slotted Angle Shelving storage for home, office, and warehouse
Number of Layer	2 - 7 layers, can be combined freely
Loading Weight	Holding weight UDL 50KG - 150KG/layer
Application	Home, Office, Warehouse
Charactoristic	Environmental powder-coated and Anti-corrosion

Intended for **storing lighter items** like boxes, cartons, small parts, files, etc. - not heavy palletized goods.

Typically has lower weight capacity per shelf level, often in the range of **100-500 lbs per shelf**.

Shelf depths are usually shallower, around **12-18 inches deep**.

Shelves are often **adjustable** to accommodate different product sizes.

Commonly used in **retail stockrooms, offices, garages, warehouses for lighter storage needs**.

More **affordable and easier to install** than heavy duty industrial pallet racks.

Provides **good visibility and accessibility** to stored items on the shelves.

Suited for **manual handling** rather than powered equipment like forklifts.

### Detailed Photos

### Product color (customizable)



### Dimensions

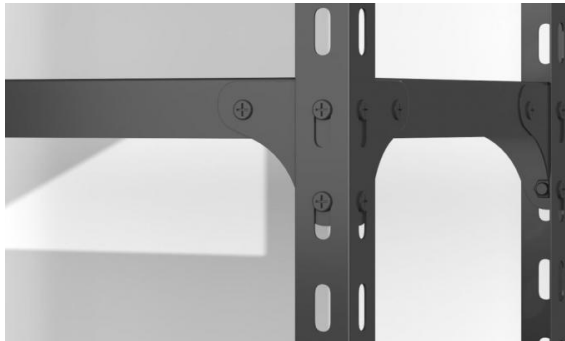
L60*W30*H60/80/120/150/180CM	L60*W40*H60/80/120/150/180CM
L70*W30*H60/80/120/150/180CM	L70*W40*H60/80/120/150/180CM
L80*W30*H60/80/120/150/180CM	L80*W40*H60/80/120/150/180CM
L90*W30*H60/80/120/150/180CM	L90*W40*H60/80/120/150/180CM

L100\*W30\*H60/80/120/150/180CML100\*W40\*H60/80/120/150/180CM

L120\*W30\*H60/80/120/150/180CML120\*W40\*H60/80/120/150/180CM



## **Details**

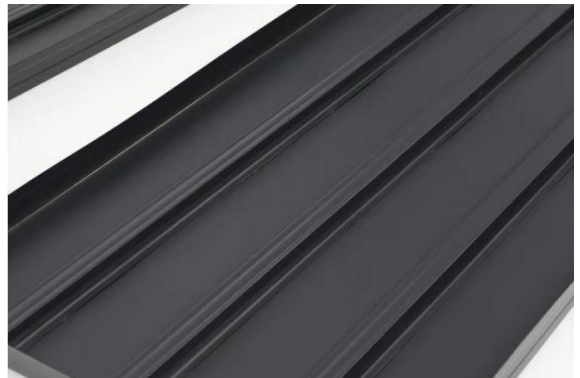


### **Stand Details**

The Light Duty Shelving has adjustment holes on both sides, so the height can be adjusted freely according to needs.

### **Decking Details**

There are multiple reinforcing ribs on the back of the SHELVING DECKING

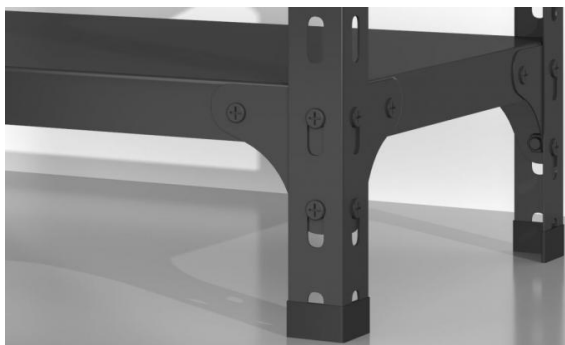


### **Triangle Screw**

Quality hardware accessories  
Made of high-quality hardware screws  
Tightly connected  
Strong and stable  
Waterproof and rust-proof

### Feet Covers

The installation accessory foot covers are made of high-quality plastic to effectively protect the floor and increase stability.



### Real Case Display







Produce Process



Raw Material

Cold Rolling

Rust Removal



Cutting Plate

Bending

Welding

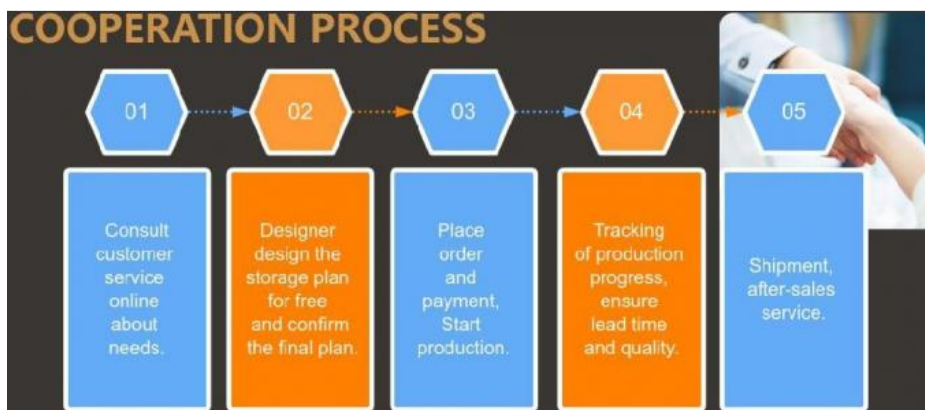


Powder Coating

Packing

Loading Container

## Co-operation Process



## Packaging & Shipping

**Packaging:** Customized packing methods is supported



**Shipping:**

MOT AS YOUR REQUEST

**EXPRESS**

Express door to door is the most convenient one. 5-7days will arrive

AIR FREIGHT FOR URGENT  
Transit time: 5-7 days

OCEAN SHIPPING NORMALLY  
Transit time: 15-40 days

## Company Profile

## Jiangsu Qifei Intelligent Storage Equipment Co., Ltd



Established in 2020, is one of the leading manufacturer specialized in industrial warehouse storage equipment.



Main products are heavy/medium/light duty rack, cantilever rack, mezzanine floor, drive in rack, and so on.



We aim to provide cost-effective and space utilization storage solutions for all customers worldwide



### FAQ

Q: Are you manufacturer or trading company?

A: We are experienced manufacturer in the warehouse storage industry.

Q: How is your delivery time?

A: Generally, it is within 25 days against formal order and deposit. It also depends on other factors such as order quantity.

Q: What is the payment term?

A: T/T 30% as deposit, and 70% before delivery. We'll show you the photos of the products and packages before you pay the balance.

Q: What is your terms of delivery?

A: EXW, FOB

Q: Are samples available?

A: Yes, We can supply the sample if we have ready parts in stock, but the customers have to pay the sample cost and the courier cost.

Q: What is the minimum order quantity?

A: Generally, MOQ is 10sets.

Q: Can I make my own brand and designed products?

A: Yes, we do both OEM and ODM, so you can make your own product with your own logo.

Q: Where is your factory? Can I visit it?

A: Our factory located in Nanjing, Welcome to visit our factory. We can arrange pick-up from the airport or train station for you.

Q: What parameters do I need to provide for an accurate quotation?

- 1) Quantity(set)
- 2) Size: Length\*Width\*Height (mm) or samples or technical drawings
- 3) Load capacity per layer(kg)
- 4) Number of layers

Q: What is the material being used for your products?

A: Mild steel Q235.

Q: I don't have drawing or picture available for the products, could you design it for me?

A: Yes, we can make the best suitable design for you but need to know more details.



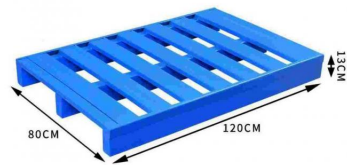
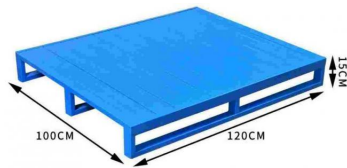
Q: Do I get any guarantee from your company?

A: 3~10 years warranty

Q: How do you make our business long-term and good relationship?

A: Quality makes trust and reputation, plus competitive price to ensure our customers benefit ;

#### Hot Sales



**Jiangsu Qifei Intelligent Storage Equipment Co., Ltd.**



+86-15161451461



sharonyan@qifeirack.com



warehouse-rackings.com

Add: #739 Dixiu Road Jiangning District Nanjing China